



PRIME DEVELOPMENT LAND

133rd Street & Brougham Drive, Olathe, KS

FOR SALE
OR BUILD
TO SUIT



2.05 ACRES FOR SALE OR BUILD-TO-SUIT

DEMOGRAPHICS

	1 mile	3 miles	5 miles
Estimated Population	11,908	104,550	210,583
Avg. Household Income	\$79,736	\$104,242	\$117,012

- 8,000 SF to 12,000 SF planned professional office
- Zoned CP-O - Excellent for Office, Medical, or Daycare
- Adjacent to new flagship Olathe Indian Creek Public Library, Apartments, and Senior Living Facility
- All utilities available
- Scenic views of Indian Creek Greenway, Walking Trails and Stream
- Abundant Restaurants, Retailers, and Services nearby

 [CLICK HERE TO VIEW MORE LISTING INFORMATION](#)

For More Information Contact: *Exclusive Agent*
MITCH DICARLO | 816.412.7320 | mjdicarlo@blockandco.com





PRIME DEVELOPMENT LAND

133rd Street & Brougham Drive, Olathe, KS

FOR SALE
OR BUILD
TO SUIT

CONCEPTUAL RENDERING



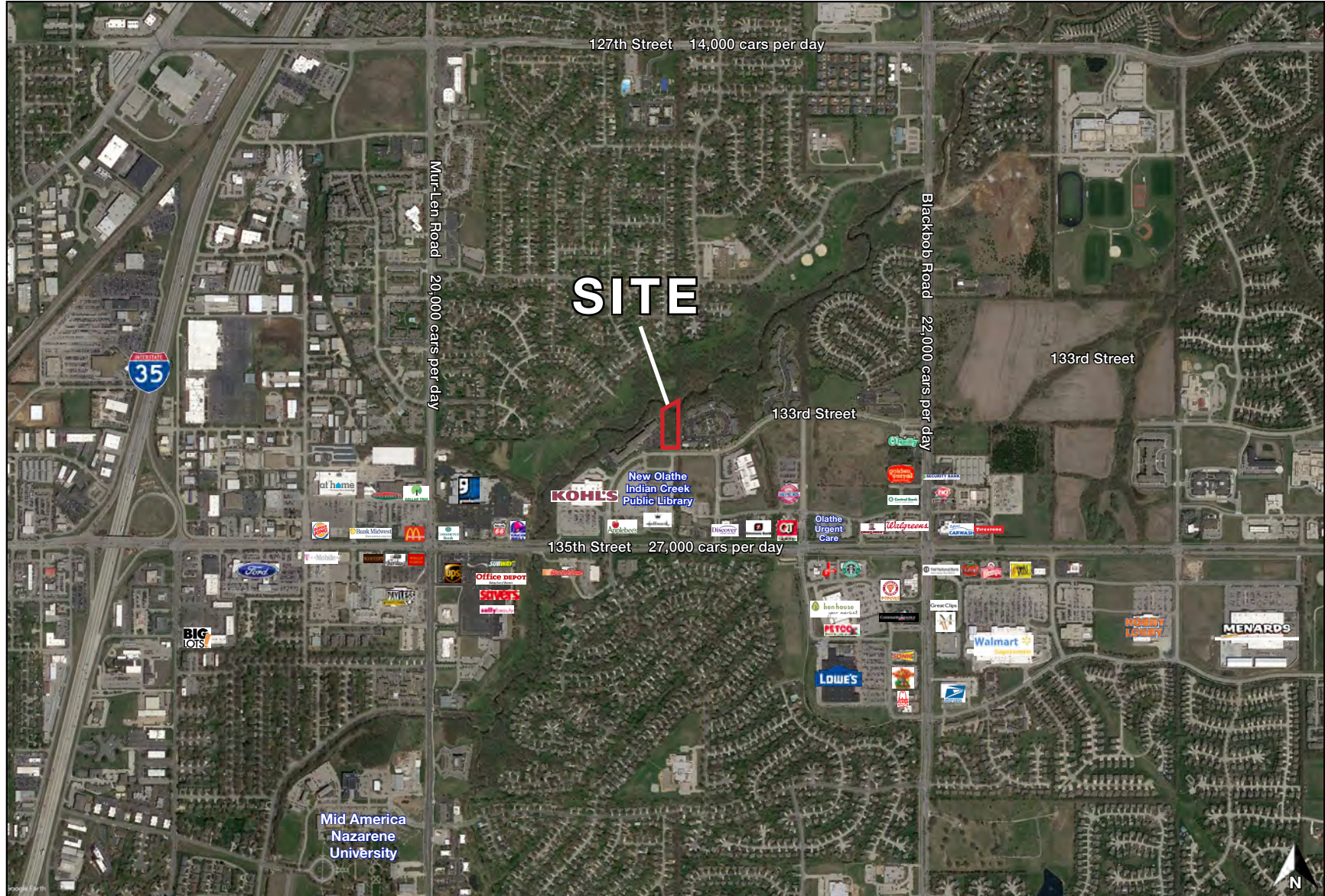


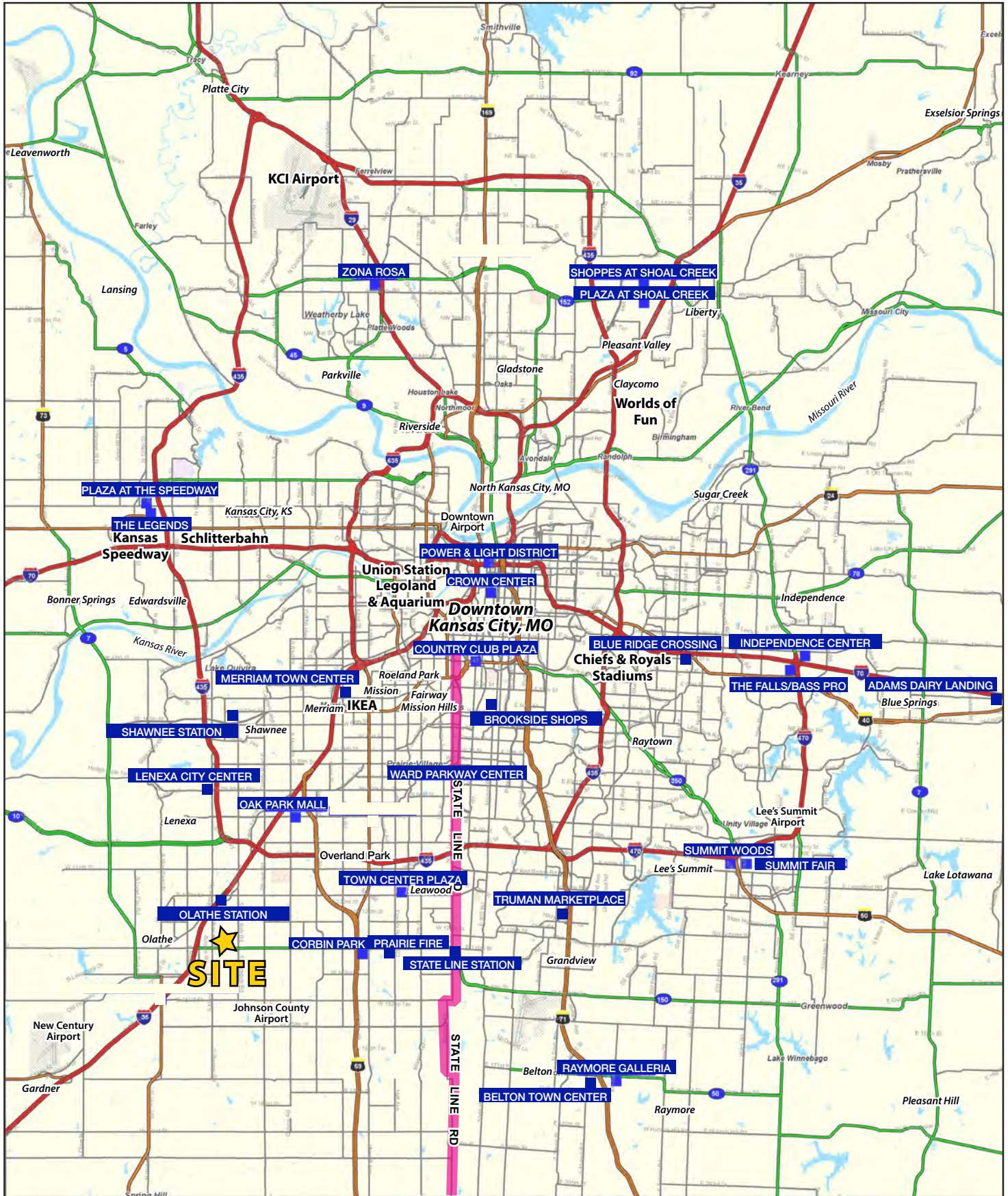
PRIME DEVELOPMENT LAND

133rd Street & Brougham Drive, Olathe, KS

FOR SALE
OR BUILD
TO SUIT

AERIAL



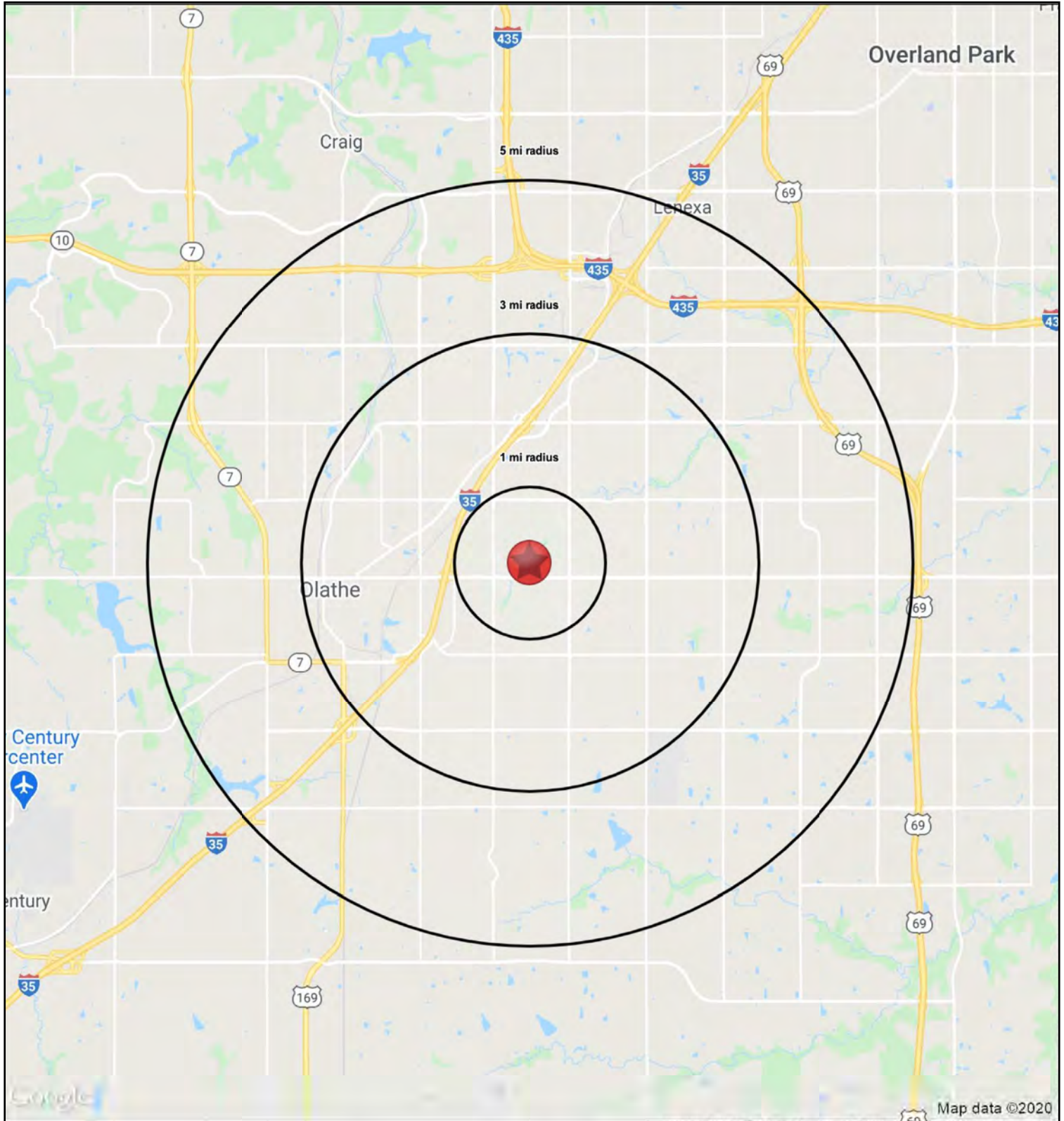




PRIME DEVELOPMENT LAND

133rd Street & Brougham Drive, Olathe, KS

FOR SALE
OR BUILD
TO SUIT





PRIME DEVELOPMENT LAND

133rd Street & Brougham Drive, Olathe, KS

**FOR SALE
OR BUILD
TO SUIT**

133rd Street & Brougham Drive

Olathe, KS 66062

1 mi radius 3 mi radius 5 mi radius

		1 mi radius	3 mi radius	5 mi radius
POPULATION	2020 Estimated Population	11,908	104,550	210,583
	2025 Projected Population	12,490	109,568	220,810
	2010 Census Population	11,298	98,538	187,182
	2000 Census Population	9,911	82,357	147,270
	Projected Annual Growth 2020 to 2025	1.0%	1.0%	1.0%
	Historical Annual Growth 2000 to 2020	1.0%	1.3%	2.1%
	2020 Median Age	33.1	35.0	35.6
HOUSEHOLDS	2020 Estimated Households	4,773	39,545	79,627
	2025 Projected Households	5,010	41,471	83,524
	2010 Census Households	4,393	35,854	68,757
	2000 Census Households	3,571	28,768	52,561
	Projected Annual Growth 2020 to 2025	1.0%	1.0%	1.0%
	Historical Annual Growth 2000 to 2020	1.7%	1.9%	2.6%
RACE AND ETHNICITY	2020 Estimated White	78.1%	80.6%	81.2%
	2020 Estimated Black or African American	8.1%	5.8%	5.6%
	2020 Estimated Asian or Pacific Islander	5.2%	5.9%	6.5%
	2020 Estimated American Indian or Native Alaskan	0.5%	0.4%	0.4%
	2020 Estimated Other Races	8.1%	7.2%	6.4%
	2020 Estimated Hispanic	12.8%	10.5%	9.1%
INCOME	2020 Estimated Average Household Income	\$79,736	\$104,242	\$117,012
	2020 Estimated Median Household Income	\$69,645	\$86,517	\$97,486
	2020 Estimated Per Capita Income	\$32,071	\$39,498	\$44,300
EDUCATION (AGE 25+)	2020 Estimated Elementary (Grade Level 0 to 8)	3.0%	3.0%	2.5%
	2020 Estimated Some High School (Grade Level 9 to 11)	4.2%	3.1%	2.7%
	2020 Estimated High School Graduate	15.7%	16.0%	13.9%
	2020 Estimated Some College	23.4%	19.5%	17.8%
	2020 Estimated Associates Degree Only	9.7%	8.5%	8.2%
	2020 Estimated Bachelors Degree Only	29.5%	32.0%	34.5%
	2020 Estimated Graduate Degree	14.6%	17.9%	20.5%
BUSINESS	2020 Estimated Total Businesses	859	3,842	8,146
	2020 Estimated Total Employees	8,563	51,089	113,495
	2020 Estimated Employee Population per Business	10.0	13.3	13.9
	2020 Estimated Residential Population per Business	13.9	27.2	25.9

